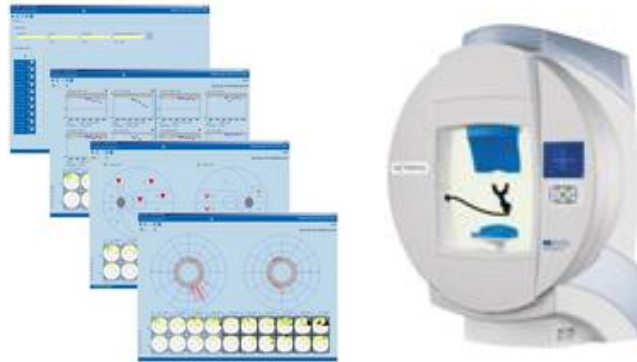


Why Octopus with EyeSuite?



Flexibility:

- Ability to easily import existing HFA data into EyeSuite
- Analyze imported HFA data with EyeSuite's advanced progression analysis
- Ability to provide either an HFA print-out or an Octopus 7-in-1 print-out
- Can use standard HFA test patterns (10-2, 24-2, 30-2) or Octopus test patterns
- Custom test building from scratch or "point and click"

Accessibility:

- Easily networked, Ethernet based operation of perimeter and software
- MySQL database that can be loaded on a server for one common database for all patient data
- Remote viewing software (EyeSuite) that allows for two-way communication with raw data for analysis - access your exams from any computer loaded with EyeSuite and on your network
- Easily integrates with EMR systems - can receive command codes from EMR

Usability:

- Technician friendly, patient friendly PC based operation of perimeter, mouse driven
- 2 ½ minute test times with TOP Strategy
- Fixation Control - no stimulus presented during blinks, eye darts or head movement
- Eye Tracking - for small eye movement fixation is maintained through Automatic Eye Tracking

Versatility:

- One perimeter for:
 - Goldmann Kinetic (Computer-assisted and manual)
 - Standard white/white static perimetry

- Blue / Yellow (SWAP)
- Flicker
- Red / White

One perimeter for:

- Screening
- Follow-up
- End stage & Low Vision testing

Multiple methods of data analysis

- Trend analysis
- Polar analysis and polar trend analysis
- Cluster analysis and cluster trend analysis
- Series analysis

Sincerely,

Daniel R. Reberski

Daniel R. Reberski
President

dan@starophthalmic.com

WHERE SERVICE AND QUALITY COUNT
PH: 630/655-4500 800/782-7462 FAX: 630/655-4530
WWW.STAROPHTHALMIC.COM

VISIT US ON [facebook](#) FOLLOW US ON [twitter](#) VIEW US ON [YouTube](#)